

WHAT'S NEXT

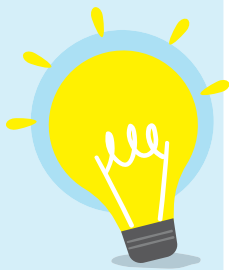


TAKING MY NEXT STEP
FORWARD AFTER MY

GCE N-LEVEL

So, What's Next after N-Level?

Use this brochure to help you in your decision-making! Start your journey by:



- 1. Discovering Purpose**
- Who am I?
- 2. Exploring Opportunities**
- Where do I want to go?
- 3. Staying Relevant**
- How do I get there?

As you consider these questions, you will have a deeper understanding of your values, interests, personality and skills. This will enable you to make an informed decision on your journey after N-Level.

1

DISCOVERING PURPOSE – WHO AM I?

The more I know about myself, the better my decisions on how I can meaningfully play a part in my community.

To find out more about myself, I can think about these questions:

- What are some of the things that I enjoy doing?
- How would I describe my values, interests, personality and skills?
- What are my goals and aspirations?
- How do I want to contribute to my home, school and community through my goals and aspirations?



To find out more about work values, career interests, skills confidence and learning styles, and learn more about yourself, please visit:

<https://go.gov.sg/mysfsec-knowyourself>



2

EXPLORING OPPORTUNITIES – WHERE DO I WANT TO GO?

There are many education and career opportunities which I can confidently explore, while respecting the value of all occupations.

I Want to Continue my Studies

To explore my post-secondary education pathways, I can think about these questions:

- What type(s) of educational institutions is/are suitable for me?
- What are the learning programmes, subjects and CCAs offered that I can confidently take up?
- How will the programmes in the educational institutions support the further development of my values, interests, personality and skills?
- Have I done enough research to fully understand the requirements and the programmes offered in the educational institution(s)?

These are the various education pathways after GCE N-Level:

- Institute of Technical Education (ITE)
 - Nitec & 3-year Higher Nitec (<https://www.ite.edu.sg/courses/full-time-courses/nitec-and-3-year-higher-nitec>)
 - Traineeship (<https://www.ite.edu.sg/courses/traineeship-courses>)
 - 2-year Higher Nitec via Direct-Entry-Scheme to Polytechnic Programme (DPP) (<https://www.ite.edu.sg/courses/full-time-courses/higher-nitec-for-dpp>)
 - 3-year Nitec with Enhanced Nitec Foundation Programme (for GCE N(T) Levels holders with 0 or 1 N(T)-Level passes only)
- Taking GCE O-Level at Secondary 5 in current school (for GCE N(A)-Level holders only)
- Polytechnic through Polytechnic Foundation Programme (PFP) (for GCE N(A)-Level holders only) (<https://go.gov.sg/admissions-pfp>)
- Nanyang Academy of Fine Arts via NAFA Foundation Programme (NFP) (for GCE N(A)-Level holders only) (<https://www.nafa.edu.sg/courses/foundation/nafa-foundation-programme>)

To find out more about the various education pathways after GCE N-Level, please visit:



Admissions Exercises and Programmes
<https://go.gov.sg/admissions-nlevel>





To find out more about post-secondary education institutions, please visit:



Overview of PSEIs

<https://go.gov.sg/overview-pseis>



CourseFinder

<https://go.gov.sg/coursefinder>



Explore Education Institutions

<https://go.gov.sg/explorepostsec>



To find out more about how others have made informed decisions on their education and career journeys, please visit:

<https://go.gov.sg/next-step-forward>

To consider retaking my GCE N-Level examinations, I can think about these questions:

- What will I do differently to achieve a better outcome?
- How can I cope with the academic rigour?
- What do I have to consider if I want to enrol in a Private Education Institution?
- Have I considered the 3Rs?

Reasons – Why am I retaking my GCE N-Level?

Readiness – How ready am I to retake my GCE N-Level?

Risks – What are the possible drawbacks involved in retaking my GCE N-Level as a private candidate?



To find out more about the 3Rs, please visit:

<https://go.gov.sg/3rs>



I Want to Enter the Workforce

To consider entering the workforce, I can think about these questions:

- Am I ready to enter the workforce? What are the considerations and trade-offs?
- What are other factors that could influence my decision?
- What are some of the industries/occupations I can consider, related to my strengths and interests?
- What are the skills required to enter and do well in that role?

There are opportunities to upgrade your skills through:

- Industry-relevant modular courses for bite-sized upskilling at ITE and private training providers
- Programmes such as part-time Nitec and Higher Nitec offered by ITE
- Workforce Skills Qualification courses



To find out more about the industry landscape, please visit:

<https://go.gov.sg/industrylandscape-sec>

3

STAYING RELEVANT – HOW DO I GET THERE?

By staying adaptable and resilient, I can continuously pursue opportunities for learning to develop myself.

To achieve my goals and aspirations, I can think about these questions:

- What are the different possibilities that can lead to my goals and aspirations?
- How can I work towards my goals and aspirations and be resilient in pursuing them?
- What can I do and who can I turn to when I am facing challenges?
- How can I continue to develop myself and pursue my goals and aspirations through lifelong learning?

To find out more about how you can plan for your education and career journey, please visit:



MySkillsFuture Student Portal
(Secondary)

<https://go.gov.sg/MySFSec>



Where can I find out more about scholarships and financial assistance schemes?

Access the MOE website or websites of the ITE and polytechnics for more information on scholarships and financial assistance schemes.



For more resources to support you in your journey after GCE N-Level, please visit:



Fees, Assistance, Awards and Scholarships
<https://go.gov.sg/faas>



Post-Secondary Education Account
<https://go.gov.sg/pseaccount>

What if I need more guidance and assistance to make an informed decision?



Make an appointment to speak with your ECG Counsellor in school or via
<https://go.gov.sg/moe-ecg-centre>
ECG Hotline: +65 6831 1420
Email: MOE_ECG@moe.gov.sg

As you think through your options, remember that there are people around you whom you can turn to for support. Speak with your parents/guardians and teachers to learn about their perspectives and experiences.

**Be hopeful, resilient and adaptable
as you explore the possibilities after N-Level!**



Ministry of Education
SINGAPORE

1 North Buona Vista Drive Singapore 138675
Tel: 6872 2220 Website: www.moe.gov.sg

©2022 Education and Career Guidance Branch, Student Development Curriculum Division 1 (SDCD1), Ministry of Education, Singapore

All rights reserved. Nothing in here shall be reproduced or transmitted in any form or by any means, electronic or mechanical, including photocopying, recording or any other information storage and retrieval system, without the prior written permission of SDCCD1, Ministry of Education, Singapore.