



# My SKILLSfuture

User Guide on Education Guide  
(Secondary)

## TABLE OF CONTENTS

1	Education Guide .....	3
1.1	Singapore Education Landscape.....	5
1.2	Explore Educational Institutions.....	11
1.3	Explore Courses .....	14
1.4	Calendar of Events .....	19
1.5	My Reflections (Education Guide).....	20

# 1 EDUCATION GUIDE



Figure 1-1: Singapore Education Landscape (Education Guide)



Figure 1-2: Explore Educational Institutions (Education Guide)



Figure 1-3: Explore Courses (Education Guide)

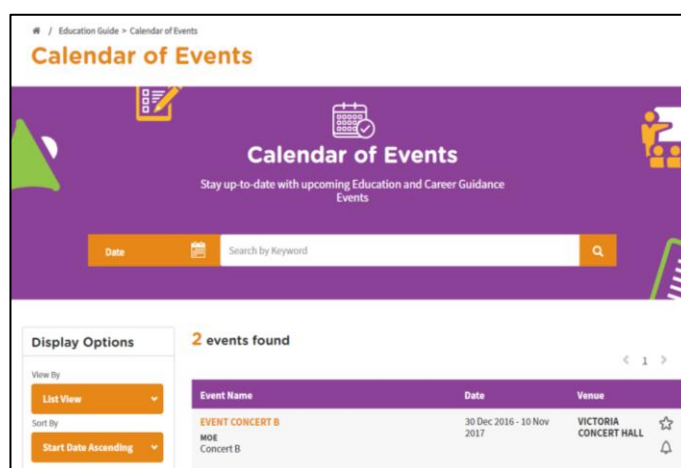




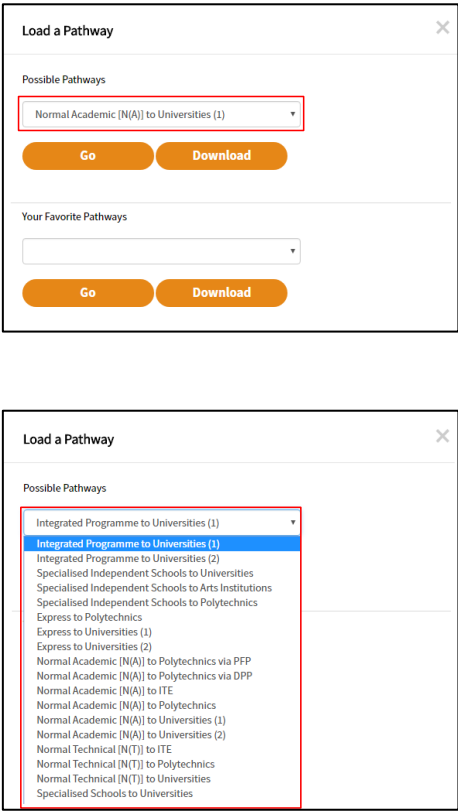
Figure 1-4: Calendar of Events (Education Guide)

The **Education Guide** lets you explore different education pathways via **Explore Pathways** and gives you an overview of the **Singapore Education Landscape**. You will be able to search and make comparisons for educational institutions and courses via **Explore Educational Institutions** and **Explore Courses** respectively. The **Calendar of Events** will let you search for career guidance and education events.

## 1.1 SINGAPORE EDUCATION LANDSCAPE

### 1.1.1 Load Pathways

**Load Pathways** lets you select any of the possible education pathways with a single click of the mouse to generate the progression of all the levels for the pathway.

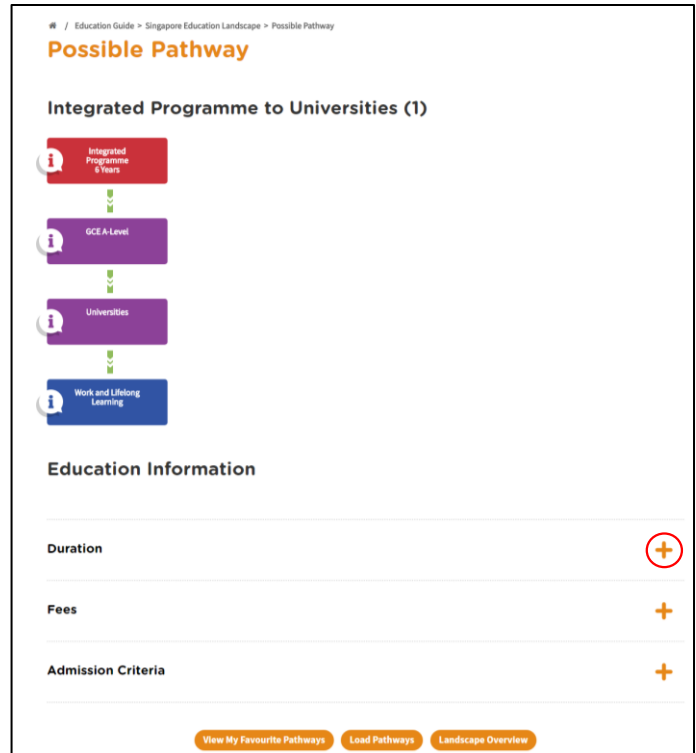
<p>1.</p>	<p>Select <b>Singapore Education Landscape</b> from the <b>Education Guide</b> drop-down menu.</p>	
<p>2.</p>	<p>The <b>Singapore Education Landscape</b> page is displayed. Click the <b>Load Pathways</b> button.</p>	
<p>3.</p>	<p>Click the Possible Pathways drop-down list to display all the pathways.</p> <p>Select a pathway and click the Go button.</p> <p>Example: “Integrated Programme to Universities (1)”.</p>	

4. The selected pathway is displayed with **Education Information** sections.

Click on the “+” symbol of any of the education sections to see the details.

Example: “Duration”

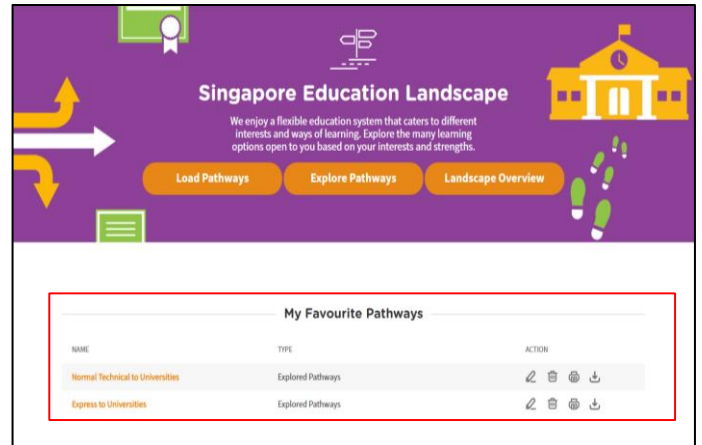
The “Duration” section is expanded to show you the duration details for the pathway.



5. Save your selected pathway as a favourite by clicking on the **Add to Favourite** symbol.



6. Pathways that you have added to Favourites will be displayed in the **Singapore Education Landscape** page.



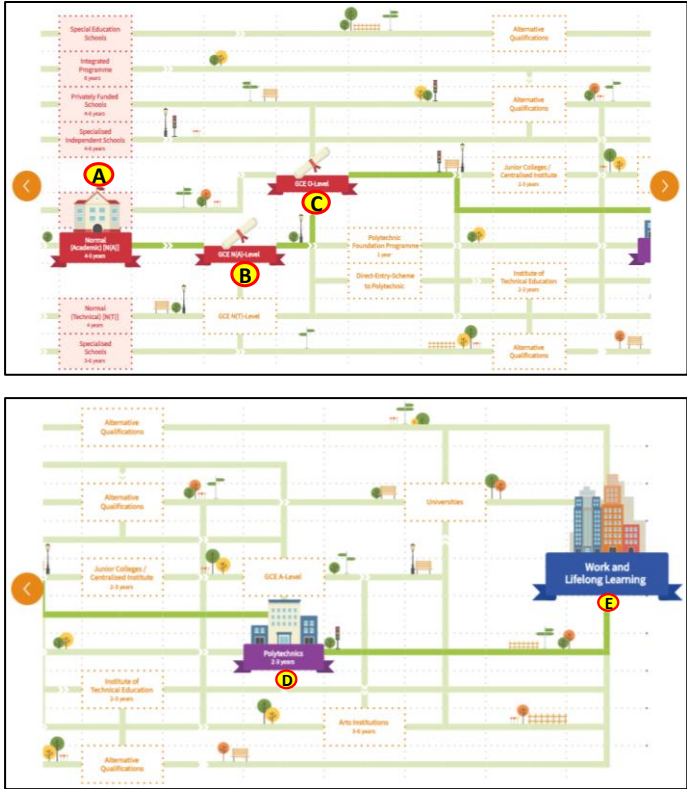
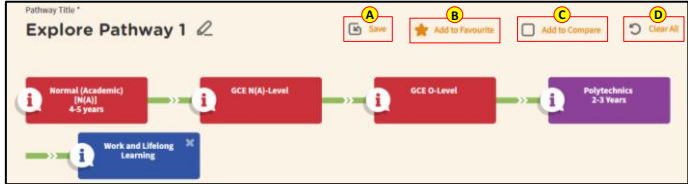


### 1.1.2 Explore Pathways

Explore Pathways provides you with a visual roadmap where you can explore possible options in the education system starting from secondary school.

<p>1. Select <b>Singapore Education Landscape</b> from the <b>Education Guide</b> drop-down menu.</p>		
<p>2. The <b>Singapore Education Landscape</b> page is displayed. Click the <b>Explore Pathways</b> button.</p> <p>The Explore Pathways roadmap is displayed.</p>		 
<p>3. Click a level from the starting point and continue to the next valid level.</p> <p>Example: To explore the “Normal (Academic) [N(A)] 4-5 years” to “Work and Lifelong Learning” pathway.</p>		



	<p>Click the following:</p> <ul style="list-style-type: none"> <li>A. Normal (Academic) [N(A)] 4-5 years</li> <li>B. GCE N(A)-Level</li> <li>C. GCE O-Level</li> <li>D. Polytechnic 2-3 years</li> <li>E. Work and Lifelong Learning</li> </ul> <p>Click on  or  buttons to scroll the roadmap to the left or right.</p>	
<p>4.</p>	<p>You can also do the following after exploring a pathway:</p> <ul style="list-style-type: none"> <li>A. Save</li> <li>B. Add to Favourite</li> <li>C. Add to Compare</li> <li>D. Clear All</li> </ul>	

### 1.1.3 Overview

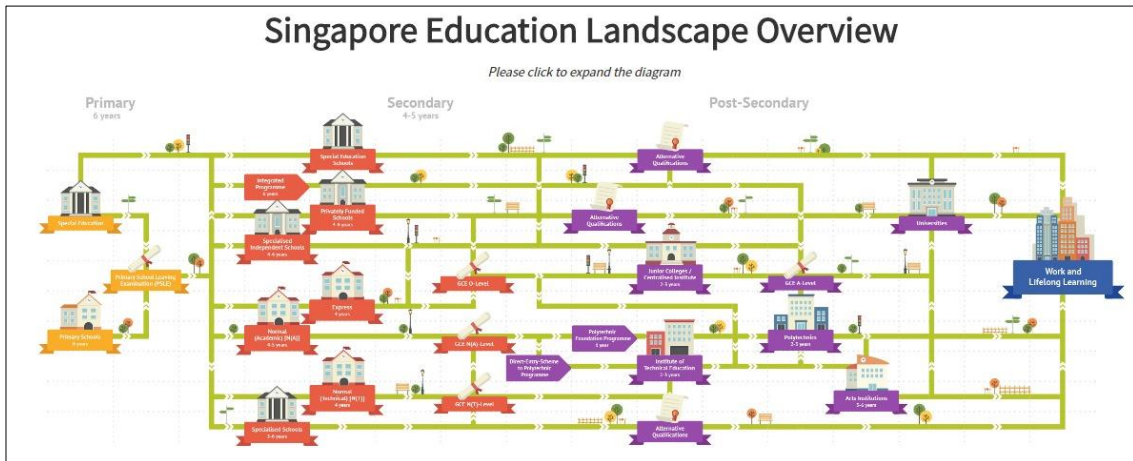


Figure 1-5: Singapore Education Landscape Overview (Education Guide)

The **Landscape Overview** (Figure 1-5), shows you all the various education pathways available. The colour-coded **Primary**, **Secondary** and **Post-Secondary** pathways all the way to **Work and Lifelong Learning** make it easier for you to understand the progression from one education level to another.

## 1.2 EXPLORE EDUCATIONAL INSTITUTIONS

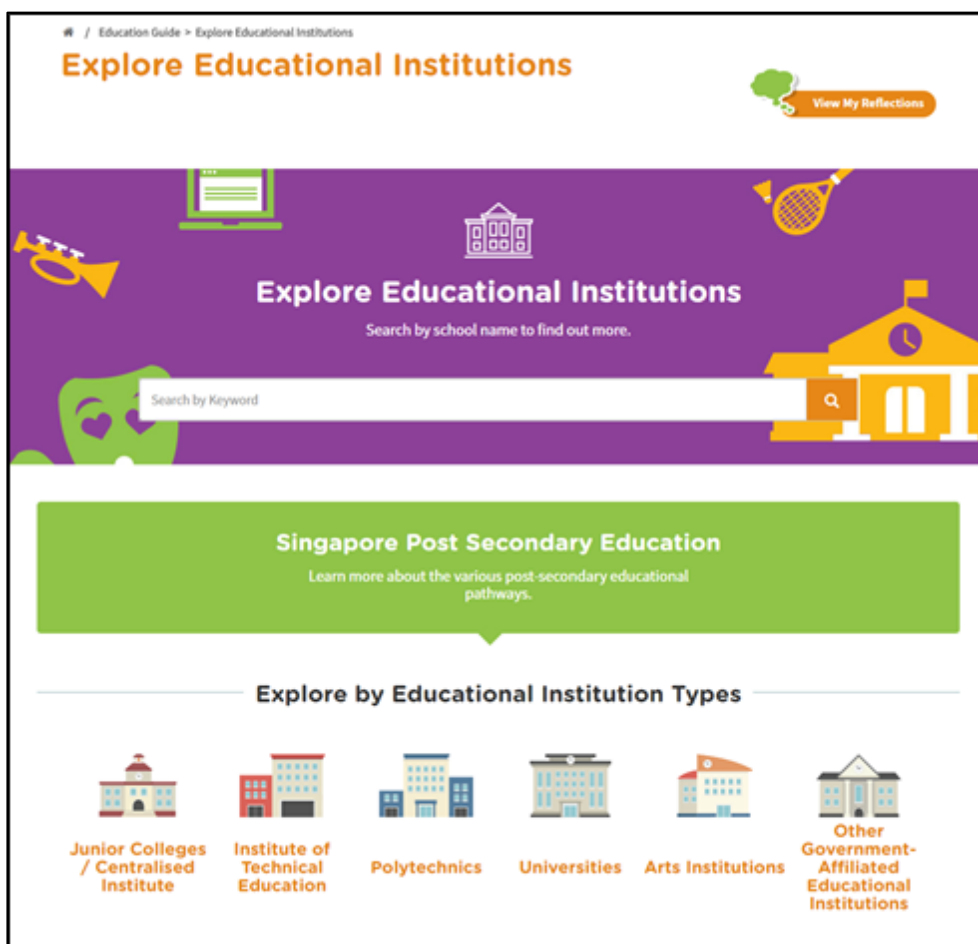


Figure 1-6: Explore Educational Institutions (Education Guide)

**Explore Educational Institutions** lets you search and find out more about the educational institutions in Singapore. You can explore using the convenient **Search by Keyword** feature or by the **Explore by Educational Institution Types** (Figure 1-6).

<p>1. Select <b>Explore Educational Institutions</b> from the <b>Education Guide</b> drop-down menu.</p>								
<p>2. The <b>Explore Educational Institutions</b> page is displayed. Click on the search bar to start typing your search keywords.</p>								
<p>3. Example: Enter a keyword “poly” for Educational Institution name</p>								
<p>4. The system will suggest Educational Institution names based on your keywords. Click on a suggested Educational Institution name. The search results display the institution(s).</p>		<table border="1"> <thead> <tr> <th colspan="2">1 educational institutions found</th> </tr> <tr> <th>Educational Institution Name</th> <th>Educational Institution Type</th> </tr> </thead> <tbody> <tr> <td>REPUBLIC POLYTECHNIC</td> <td>POLYTECHNIC</td> </tr> </tbody> </table>	1 educational institutions found		Educational Institution Name	Educational Institution Type	REPUBLIC POLYTECHNIC	POLYTECHNIC
1 educational institutions found								
Educational Institution Name	Educational Institution Type							
REPUBLIC POLYTECHNIC	POLYTECHNIC							

	<p>Search results with long lists will be paginated. Use the navigation symbols and page number index to go to a specific page.</p>	
<p>5. Click on the Educational Institution name to view the details of the institution.</p> <p>The <b>Educational Institution Detail</b> page is displayed.</p> <p>View information by clicking on the “+” symbol to expand:</p> <ul style="list-style-type: none"> <li>A. Subjects Offered</li> <li>B. Co-Curricular Activities (CCA)</li> <li>C. School Outcomes</li> <li>D. Special Student Development Programmes</li> <li>E. L1R5 Aggregate Range (With Bonus Points)</li> </ul>		

### 1.3 EXPLORE COURSES



Figure 1-7: Explore Courses (Education Guide)

**Explore Courses** lets you search and find out more about the courses offered by the educational institutions in Singapore. You can explore using the convenient **Search by Keyword** feature or browse by Fields of Study.

<p>1.</p>	<p>Click <b>Explore Courses</b> from the <b>Education Guide</b> drop-down menu.</p>	
<p>2.</p>	<p>The <b>Explore Courses</b> page is displayed. Click on the search bar to start typing your search keywords.</p>	
<p>3.</p>	<p>Example 1: Enter a <b>Course Title</b> keyword. Enter “music”. The system will suggest <b>Course Title</b> keywords or phrases as you type.</p> <p>Example 2: Enter a <b>Fields of Study</b> keyword. Enter “arch”. The system will suggest <b>Fields of Study</b> keywords or phrases as you type. Click on a suggested keyword.</p>	

<p>4. The course(s) will be displayed.</p> <p>Search results with long lists will be paginated. Use the navigation symbols and page number index to go to a specific page.</p>	
<p>5. Click on the Course Title to view the details of the Course.</p>	



6. The **Course Detail** page is displayed with the following information:

- A. Course Objectives
- B. Minimum Entry Requirements
- C. Related Courses

Browse by Fields of Study

1. You can explore courses by clicking on the **Browse by Fields of Study** drop-down menu.

The **Fields of Study** categories are displayed.

2. Example: Select “Health Sciences”.

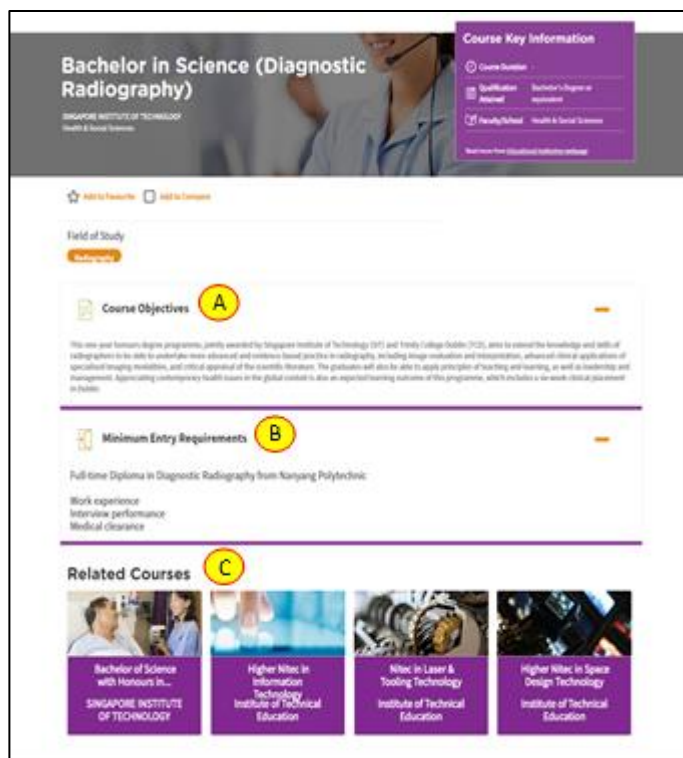
Courses found under this field of study will be listed.

Click on a Course Title.  
Example: “Bachelor in Science (Diagnostic Radiography)”.

Course	Institution	Qualification Attained
BACHELOR IN SCIENCE (DIAGNOSTIC...)	SINGAPORE INSTITUTE OF TECHNOLOGY	BACHELOR'S DEGREE OR EQUIVALENT
BACHELOR OF SCIENCE WITH HONOURS IN...	SINGAPORE INSTITUTE OF TECHNOLOGY	BACHELOR'S DEGREE OR EQUIVALENT
BSC BIOMEDICAL ENGINEERING WITH...	SIM UNIVERSITY	BACHELOR'S DEGREE OR EQUIVALENT
NITEC IN COMMUNITY CARE & SOCIAL...	INSTITUTE OF TECHNICAL EDUCATION	NITEC, CERTIFICATE IN OFFICE SKILLS, NTC GRADE 2 OR EQUIVALENT

The selected **Course Detail** page is displayed with the following information:

- A. Course Objectives
- B. Minimum Entry Requirements
- C. Related Courses



The screenshot displays the 'Bachelor in Science (Diagnostic Radiography)' course detail page. At the top right, a 'Course Key Information' box lists details such as 'Course Duration', 'Qualification Awarded', 'Faculty/School', and 'Bachelor's Degree or equivalent'. Below this, the 'Field of Study' is listed as 'Healthcare'. The main content is divided into three sections: 'Course Objectives' (A), 'Minimum Entry Requirements' (B), and 'Related Courses' (C). The 'Course Objectives' section includes a detailed description of the program's goals. The 'Minimum Entry Requirements' section lists 'Full-time Diploma in Diagnostic Radiography from Nanyang Polytechnic', 'Work experience', 'Interview performance', and 'Medical clearance'. The 'Related Courses' section features four course cards: 'Bachelor of Science with Honours in...', 'Higher Nitec in Information Technology', 'Nitec in Laser & Tooling Technology', and 'Higher Nitec in Space Design Technology', all from the Singapore Institute of Technology.

## 1.4 CALENDAR OF EVENTS

The screenshot shows the 'Calendar of Events' page. At the top, there is a purple header with the title 'Calendar of Events' and a subtitle 'Stay up-to-date with upcoming Education and Career Guidance Events'. Below the header is a search bar with a 'Date' dropdown and a 'Search by Keyword' input field. On the left side, there are two panels: 'Display Options' and 'Filter By'. The 'Display Options' panel has 'View By' set to 'List View' and 'Sort By' set to 'Start Date Ascending'. The 'Filter By' panel has 'Event Category' and 'Venue' both set to 'ALL'. The main content area shows '2 events found' and a table with the following data:

Event Name	Date	Venue
EVENT CONCERT B MOE Concert B	30 Dec 2016 - 10 Nov 2017	VICTORIA CONCERT HALL
LOREM IPSUM DOLOR SIT AMET, CONSECTETUR... Lorem ipsum dolor sit amet, co Lorem ipsum dolor sit amet, consectetur adipiscing elit. Nulla ut venenatis erat, sit amet auctor ex. Suspendisse consequat, nisl vel dictum fermentum, ante orci cursus est, et eleifend tellus arcu ve	1 Jun 2017 - 10 Jun 2017	LOREM IPSUM DOLOR SIT AMET, CONSECTETUR ADIPISCING ELIT. NULLA UT VENENATIS ERAT, SIT AMET AUCTOR EX

At the bottom of the table, there is a legend with a star icon for 'Add to Favourite' and a bell icon for 'Notify Me'. Navigation arrows are present on both sides of the event list.

Figure 1-8: Calendar of Events (Education Guide)

You can view dates and details about upcoming education and career guidance events in **Calendar of Events** (Figure 1-8).

Use the options such as **Display Options** and **Filter By** to help you search for events you may be interested in.

## 1.5 MY REFLECTIONS (EDUCATION GUIDE)

**My Reflections**

Reflection questions are open-ended questions that will guide you in looking back on the things you have learnt, and how you have learnt them.

0% Complete

What are the types of educational institutions that are suitable for me?

Next

Are the learning programmes offered by the educational institutions to nurture your interests, abilities and passion?

Previous | Next

What other factors could influence your decision?

Previous

Save Progress

Figure 1-9: My Reflections (Education Guide)

Record your thoughts on **Education Guide** via **My Reflections**.